

Shenzhen Gisantone Technology Co.,Ltd

No.30th, West Road of Shibi, Liulian, Pingdi town, Longgang
District, Shenzhen, China. 518117

Tell : 0086 0755 89390978 Fax : 0086 0755 89390979



Product Name 698-960/1710-2700MHz 11/12DBI LPDS Antenna
Model No. G13104C

- ✓ Outdoor LPDS Antenna
- ✓ Frequency band 698-960/1710-2700MHz
- ✓ Gain 11/12DBI
- ✓ Horizontal/Vertical Beam width 60/50-45/35 degree
- ✓ 1 * N-K connector
- ✓ 1 * 30CM RG58U cable



Shenzhen Gisantone Technology Co.,Ltd

No.30th, West Road of Shibi, Liulian, Pingdi town, Longgang
District, Shenzhen, China. 518117

Tell : 0086 0755 89390978 Fax : 0086 0755 89390979



Electrical Specifications

Model No.	G13104C
Frequency Range	698-960/1710-2700MHz
Gain	11/12dBi
VSWR	≤1.5
Input Impedance	50Ω
Polarization	Vertical
Horizontal Half Power Angle	65/50°
Vertical Half Power Angle	45/35°
PIMD 3th	≤-85dBm (@2W)
Max Input Power	50W
Lightning Protection	DC Ground

Mechanical Specifications

Connector Type	N-K
Cable Type	RG58/U White
Cable Length	1M
Working Temperature	-40°C~ + 65°C
Antenna Weight	600g
Size	440x205x60mm
Pole Diameter	Φ38~55mm
Rated Wind Velocity	210km/h
Antenna Cover Material	ABS
Color	White
Package Size	79*59*45.5CM / 20PCS
Weight	16.8KG

Specifications may change without notice. Contact us by sales@gisantone.com for any inquiries.

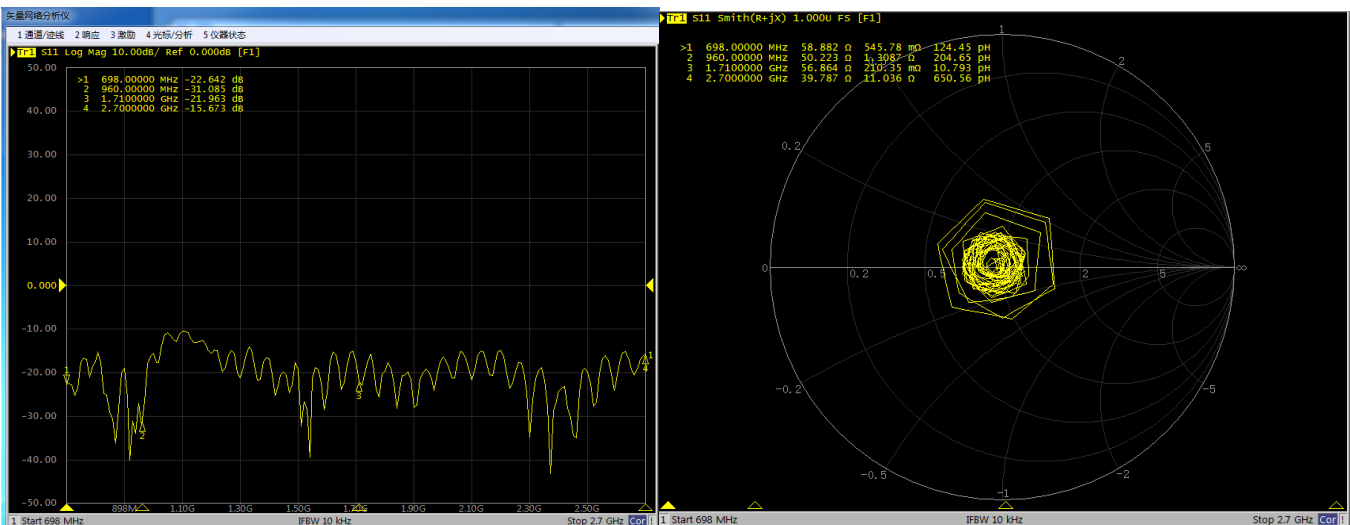
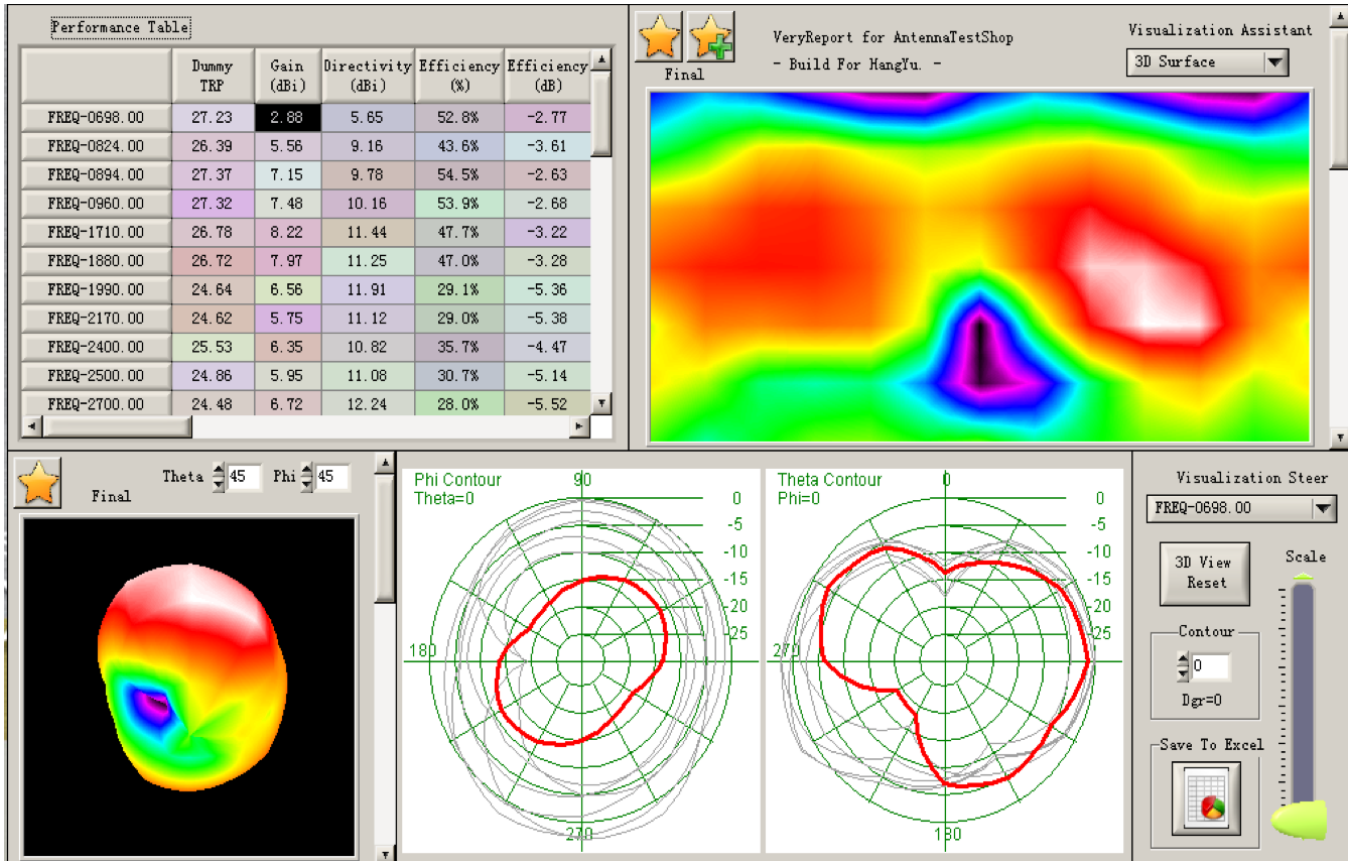
Shenzhen Gisantone Technology Co.,Ltd

No.30th, West Road of Shibi, Liulian, Pingdi town, Longgang District, Shenzhen, China. 518117

Tell : 0086 0755 89390978 Fax : 0086 0755 89390979



3



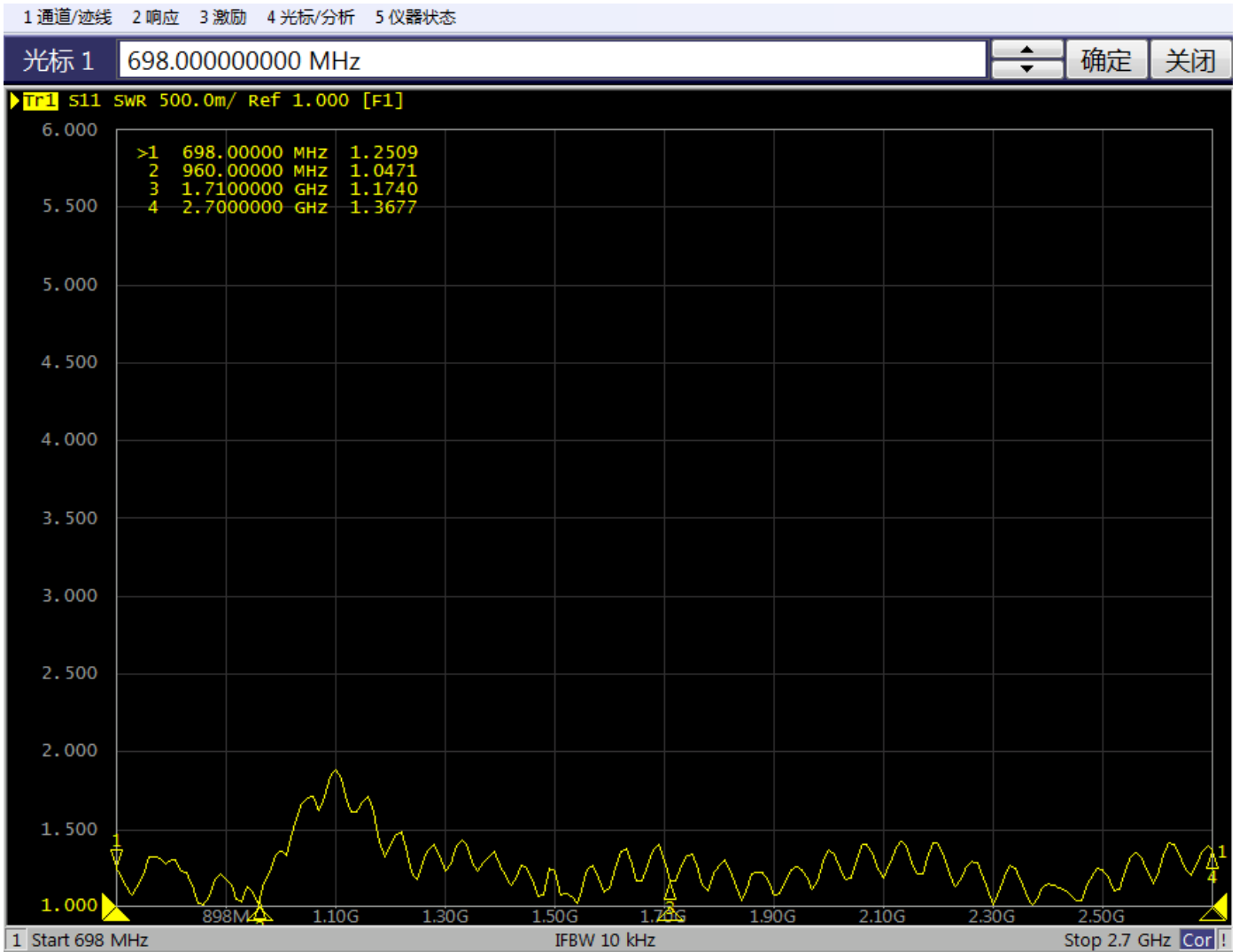
Specifications may change without notice. Contact us by sales@gisantone.com for any inquiries.

3

Shenzhen Gisantone Technology Co.,Ltd

No.30th, West Road of Shibi, Liulian, Pingdi town, Longgang District, Shenzhen, China. 518117

Tell : 0086 0755 89390978 Fax : 0086 0755 89390979



Shenzhen Gisantone Technology Co.,Ltd

No.30th, West Road of Shibi, Liulian, Pingdi town, Longgang District, Shenzhen, China. 518117

Tell : 0086 0755 89390978 Fax : 0086 0755 89390979

