

# Shenzhen Gisantone Technology Co.,Ltd

No.30<sup>th</sup>, West Road of Shibi, Liulian, Pingdi town, Longgang

District, Shenzhen, China. 518117

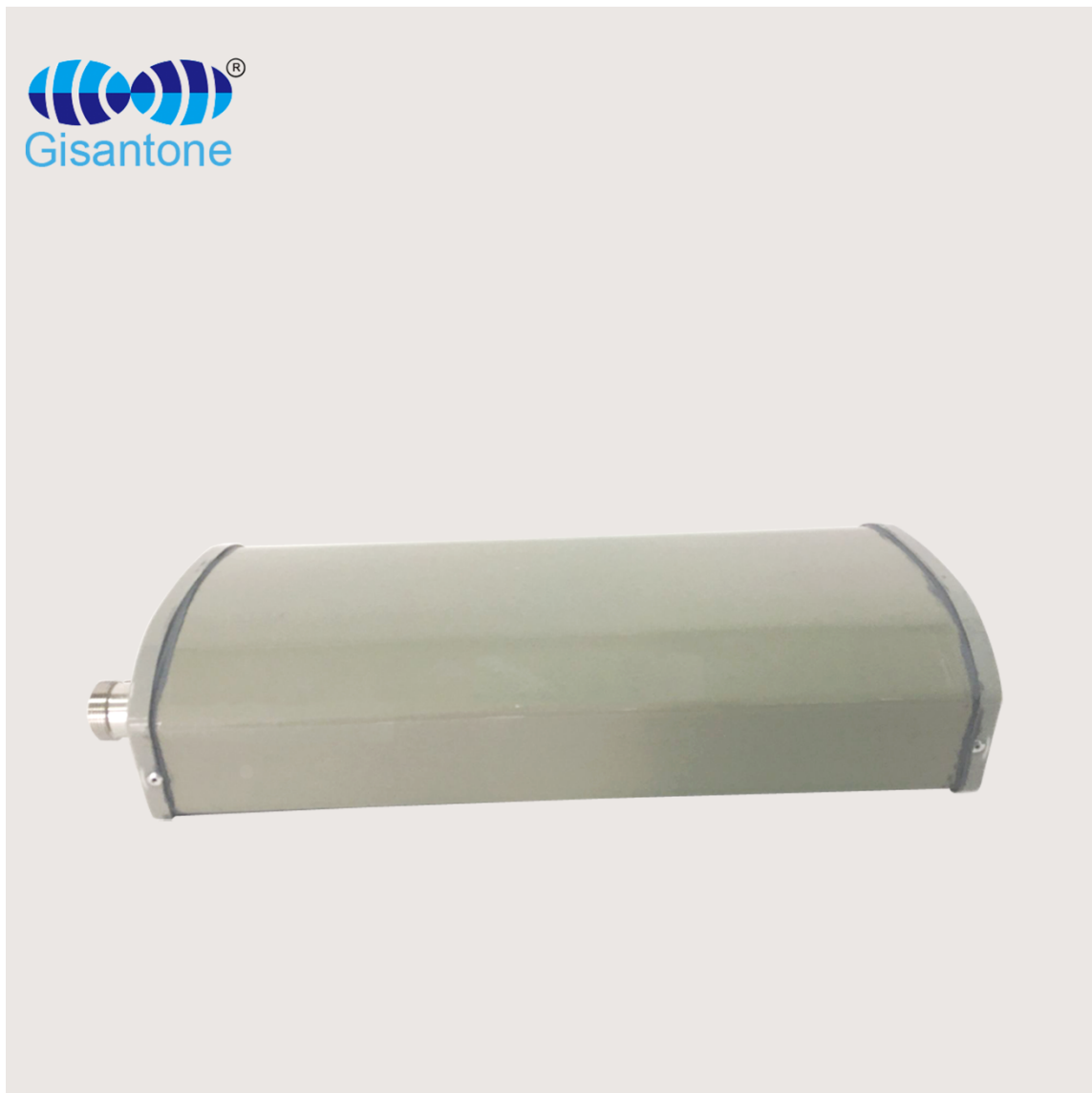
Tell : 0086 0755 89390978 Fax : 0086 0755 89390979



Product Name 870/2635MHz MIMO Outdoor Panel Antenna

Model No. G15026A

- ✓ Outdoor 870-960/1710-2635MHz MIMO Panel Antenna
- ✓ Frequency band 870-960/1710-2635MHz
- ✓ Gain 6/7DBI \* 2
- ✓ Horizontal/Vertical Beam width 65/60 degree
- ✓ 2 \* DIN connector



# Shenzhen Gisantone Technology Co.,Ltd

No.30<sup>th</sup>, West Road of Shibi, Liulian, Pingdi town, Longgang  
District, Shenzhen, China. 518117

Tell : 0086 0755 89390978 Fax : 0086 0755 89390979

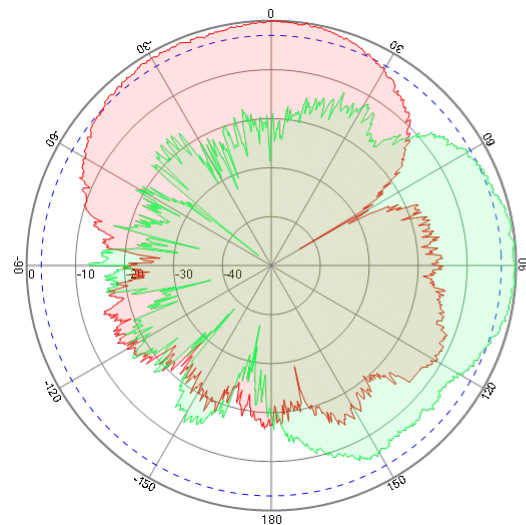
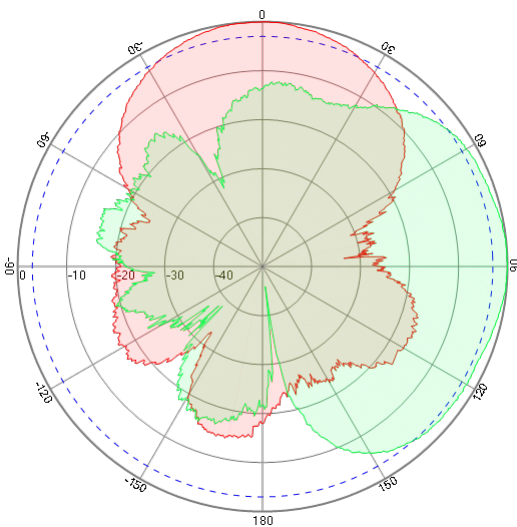
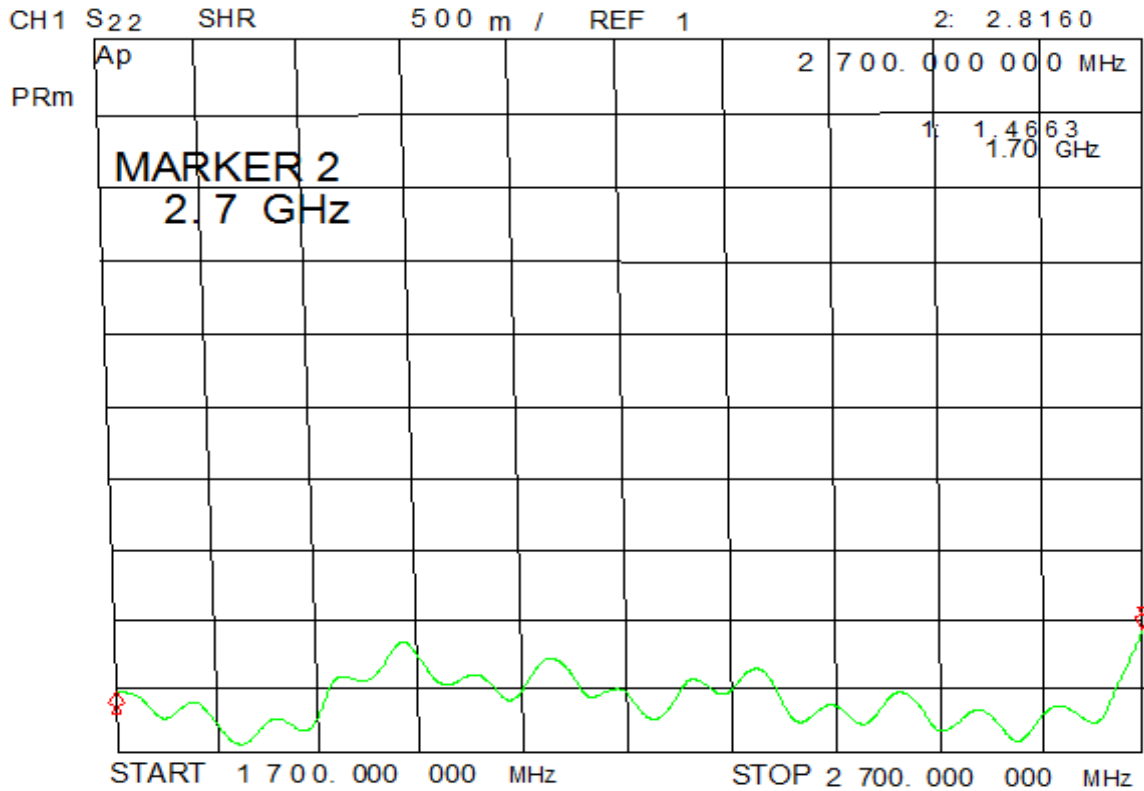


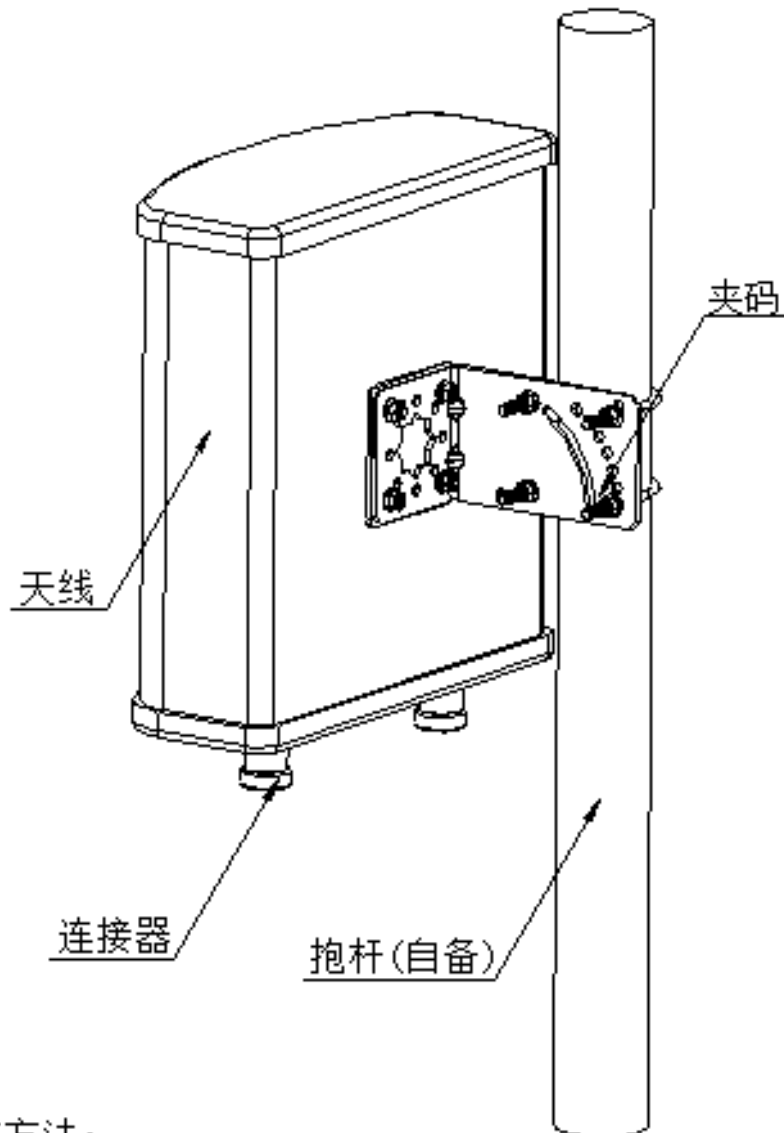
<b>Electrical Specifications</b>	
Model NO.	G15026A
Frequency Range	870-960/1710-2635MHz
Gain	2*6/7Dbi
VSWR	≤1.5
Input Impedance	50Ω
Polarization	±45°
PIMD 3TH	≤-97Dbc @2W*37dBM
Front to Back Ratio	≥25dB
Horizontal Half Power Angle	65°
Vertical Half Power Angle	60°
Max Input Power	100W
Lightning Protection	DC Ground
<b>Mechanical Specifications</b>	
Connector Type	2*DIN female
Working Temperature	-40°C~ + 65°C
Antenna Weight	0.9kg
Size	365x180x80mm
Pole Diameter	Φ40~φ55mm
Rated Wind Velocity	210 km/h
Antenna Cover Material	PVC
Color	Grey
Package Size	42*20*12 / 1pcs
Weight	2KG

# Shenzhen Gisantone Technology Co.,Ltd

No.30<sup>th</sup>, West Road of Shibi, Liulian, Pingdi town, Longgang District, Shenzhen, China. 518117

Tell : 0086 0755 89390978 Fax : 0086 0755 89390979





安装方法:

1. 首先用螺钉将L型夹码固定到天线上.
2. 再把U型夹码套到抱杆上与N型夹码配合, 将天线固定在抱杆上, 抱杆直径为( $\phi 35-\phi 50\text{mm}$ ).
3. 再将馈线与天线连接器连接; 并做好防水处理. 找到天线接收信号最佳方位, 紧固螺母;