

Shenzhen Gisantone Technology Co.,Ltd

No.30th, West Road of Shibi, Liulian, Pingdi town, Longgang
District, Shenzhen, China. 518117

Tell : 0086 0755 89390978 Fax : 0086 0755 89390979



Product Name 1700/2700MHz 2*9DBI MIMO Panel Antenna
Model No. G15022D

- ✓ Outdoor MIMO Antenna
- ✓ Frequency band 1700-2700MHz
- ✓ Gain 2*9DBI
- ✓ Horizontal/Vertical Beam width 65/30 degree
- ✓ 2 * F-K connector
- ✓ 2 * 25CM RG58U cable



Shenzhen Gisantone Technology Co.,Ltd

No.30th, West Road of Shibi, Liulian, Pingdi town, Longgang
District, Shenzhen, China. 518117

Tell : 0086 0755 89390978 Fax : 0086 0755 89390979



Electrical Specifications

| | |
|-----------------------------|--------------|
| Model No. | G15022D |
| Frequency Range | 1700-2700MHz |
| Gain | 2*9dBi |
| VSWR | ≤1.5 |
| Input Impedance | 50Ω |
| Polarization | Vertical |
| Horizontal Half Power Angle | 65°±5 |
| Vertical Half Power Angle | 30°±2 |
| Max Input Power | 50W |
| Front to Back Ratio | ≥ 18 dB |
| Lightning Protection | DC Ground |

Mechanical Specifications

| | |
|------------------------|------------------|
| Connector Type | 2*F-K |
| Cable Type | RG58/U White |
| Cable Length | 2*25CM |
| Working Temperature | -40 ~ + 65 |
| Antenna Weight | 350g |
| Size | 210x178x45mm |
| Pole Diameter | Φ38~55mm |
| Rated Wind Velocity | 210km/h |
| Antenna Cover Material | ABS |
| Color | White |
| Package Size | 52*39*40CM/20pcs |
| Weight | 11KG |

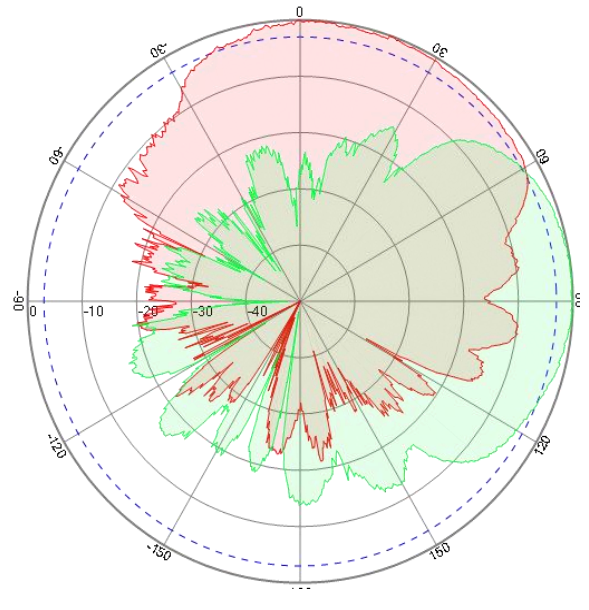
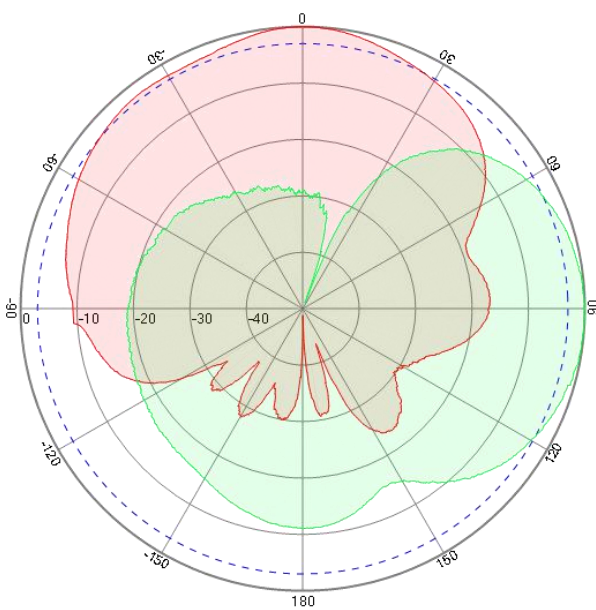
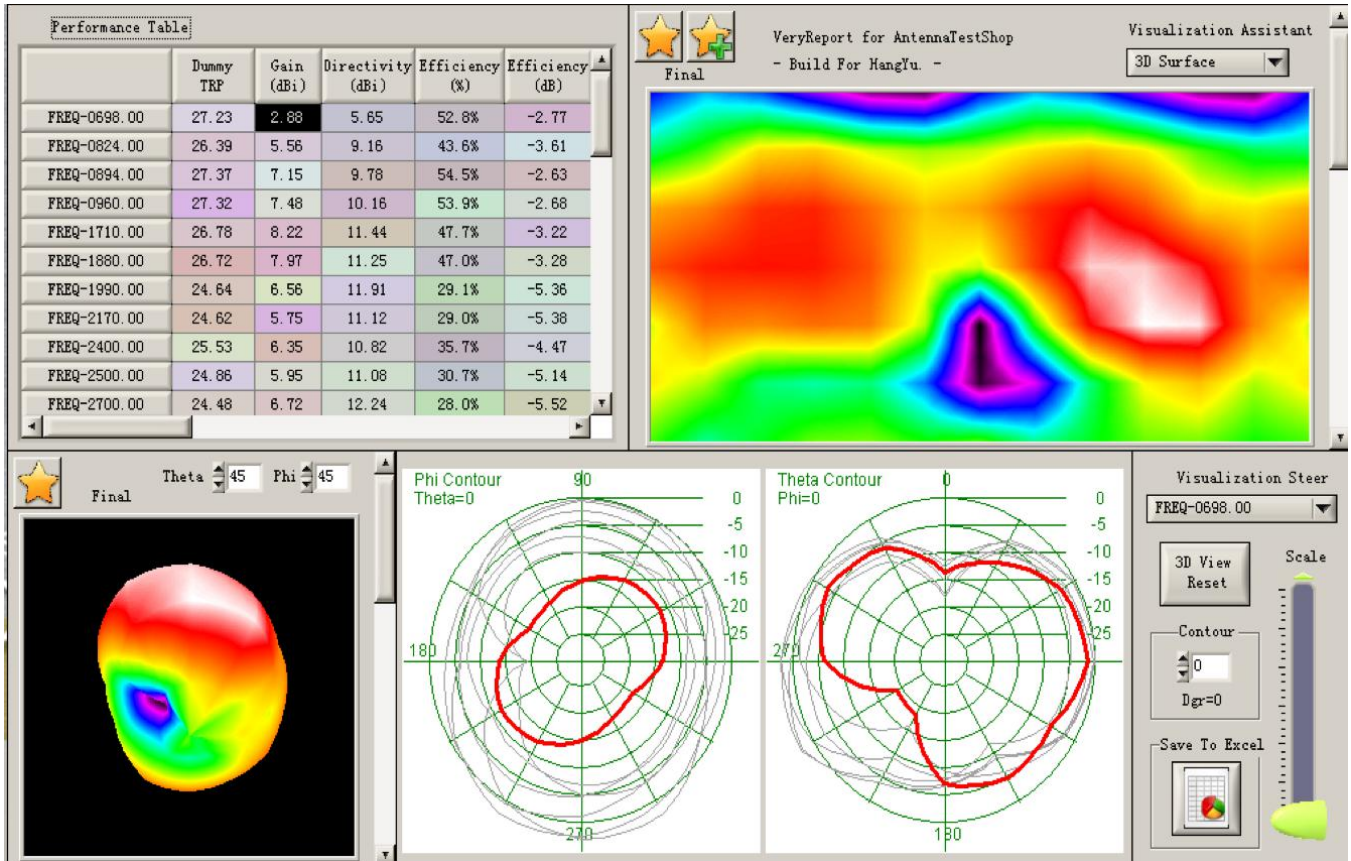
Shenzhen Gisantone Technology Co.,Ltd

No.30th, West Road of Shibi, Liulian, Pingdi town, Longgang District, Shenzhen, China. 518117

Tell : 0086 0755 89390978 Fax : 0086 0755 89390979



3



Shenzhen Gisantone Technology Co.,Ltd

No.30th, West Road of Shibi, Liulian, Pingdi town, Longgang District, Shenzhen, China. 518117

Tell : 0086 0755 89390978 Fax : 0086 0755 89390979

